

TYPE F

Ref.: 156411



ISO/PAS 11154



CITY CRASH TEST



n° 411



FIAT Fiorino Qubo

5

06/2008>

FIAT nuovo Doblò

5

01/2010>

MITSUBISHI Outlander II

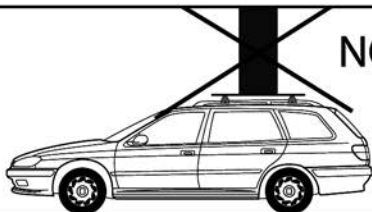
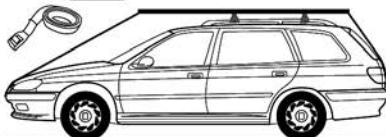
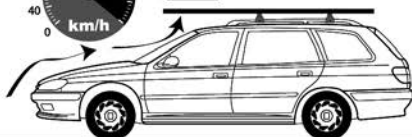
03/2007>



+



= 75 kg max.



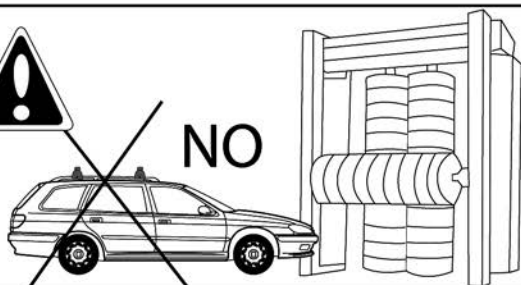
NO



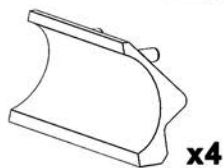
OK



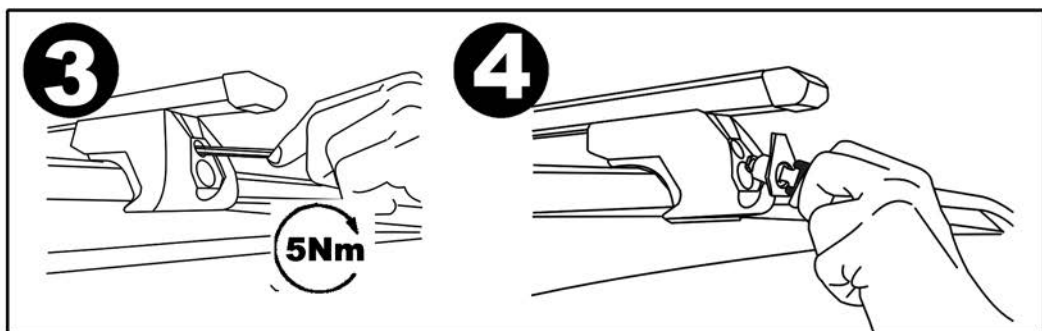
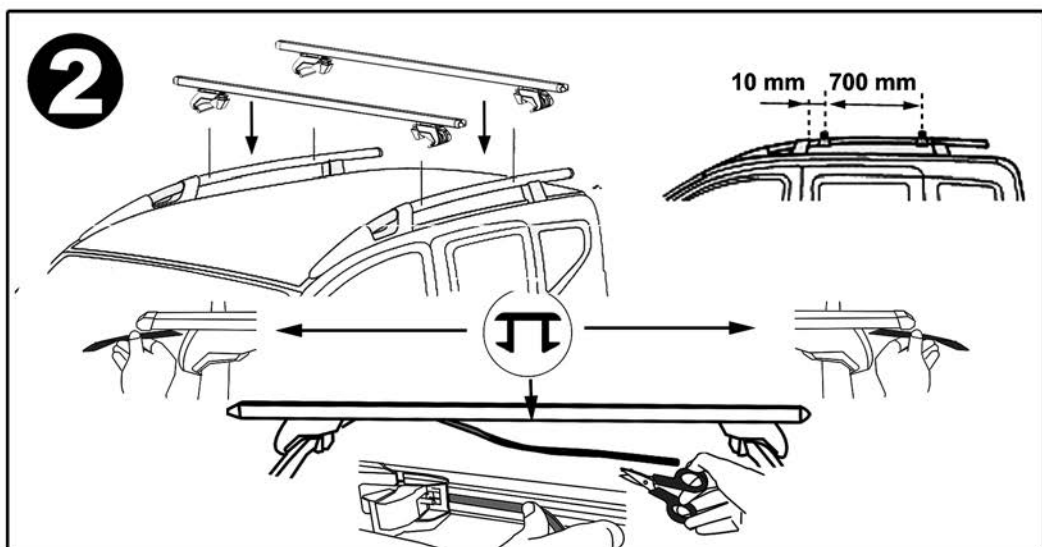
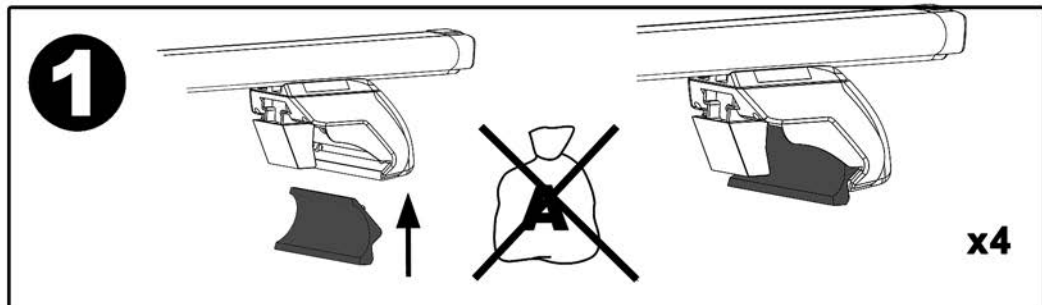
NO



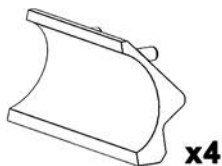
EASY ONE S.W



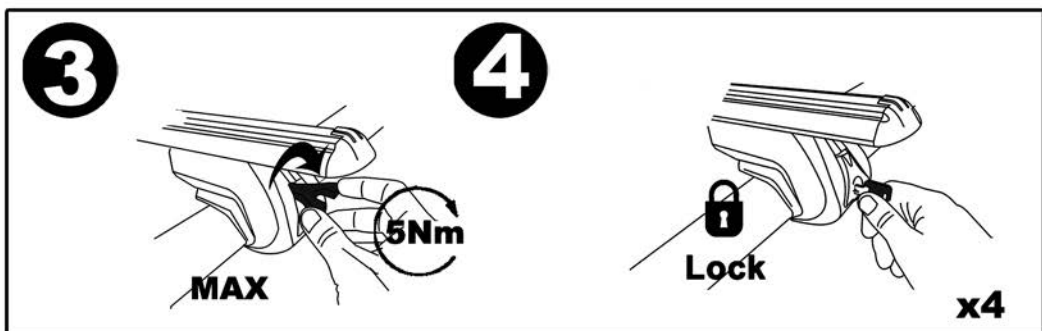
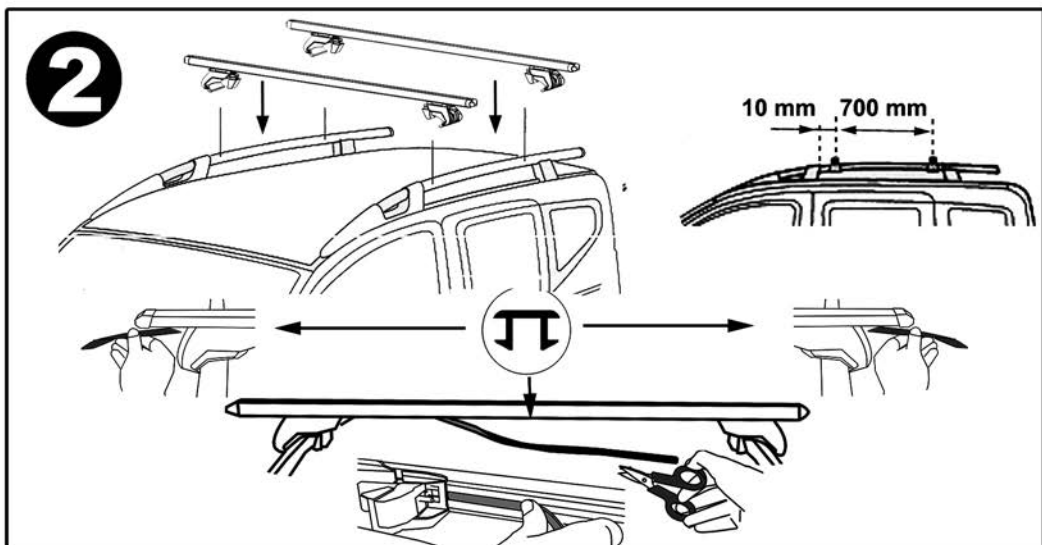
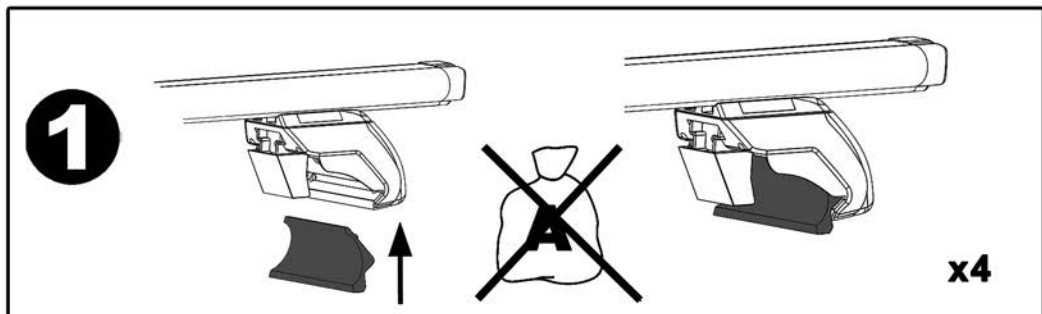
FIAT Fiorino Qubo
FIAT nuovo Doblò
MITSUBISHI Outlander II

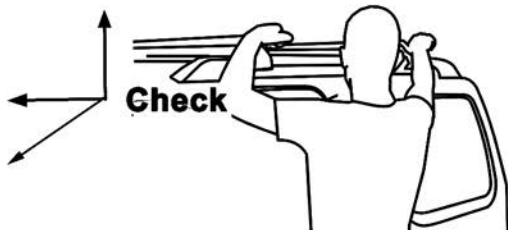
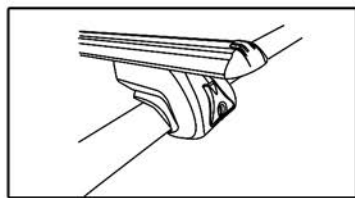
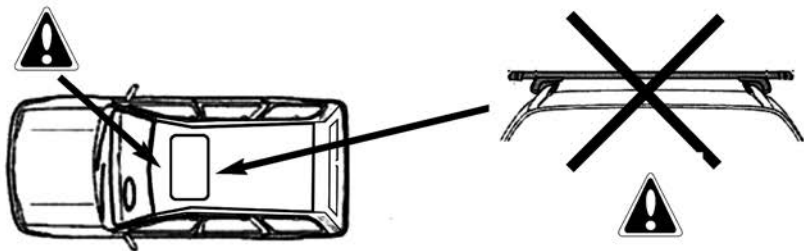


TREK CITY CRASH

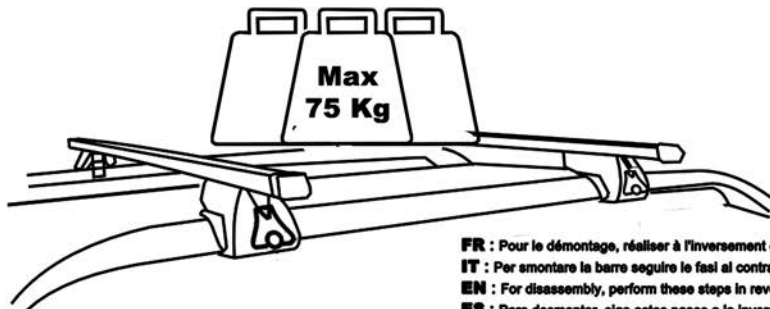


FIAT Fiorino Qubo
FIAT nuovo Doblò
MITSUBISHI Outlander II





FR: Charge maxi 100 kg ne pas dépasser la charge maximale admissible par le constructeur du véhicule.
IT: Carico massimo 100 kg non superare il carico massimo sul tetto indicato dal costruttore del veicolo
SP: Capacidad máxima de carga 100 kg no exceda la máxima carga permitido por el fabricante del vehículo.
PT: Capacidade máxima de carga 100 kg não exceder a carga máxima permitida pelo fabricante do veículo.
EN: Maximum carrying capacity 100 kg do not exceed the maximum allowable load by the vehicle manufacturer.
DE: Zulässige höchstlast 100 kg überschreiten sie nicht die maximale belastung zulässige vom fahrzeughersteller.
NL: Maximaal toegestaan 100 kg neem niet meer de maximale belasting toegestane door de voertuigfabrikant.



FR: Pour le démontage, réaliser à l'inversement ces étapes.
IT: Per smontare la barra seguire le fasi al contrario.
EN: For disassembly, perform these steps in reverse.
ES: Para desmontar, siga estos pasos a la Inversa.
PT: Para desmontar, execute estas etapas em ordem Inversa.
NL: Uit elkaar te halen, voert u deze stappen in omgekeerde.
DE: Zu zerlegen, diese Schritte in umgekehrter



www.greenvalley.fr
 AURILIS Group - 2 avenue E. Millaud - BP23 - 69290 CRAPONNE

JV/MG - 04/10 - 11100411